

パネルディスカッション話題提供
法政大学におけるLA事例

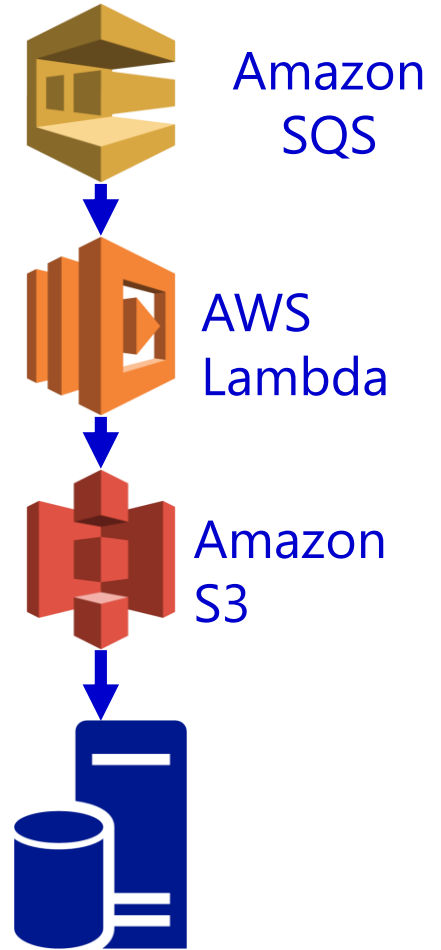
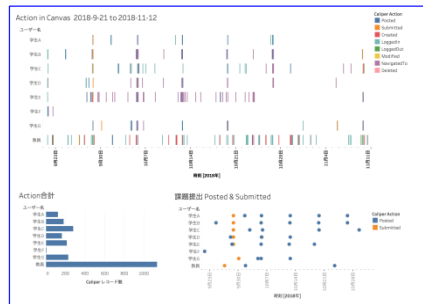
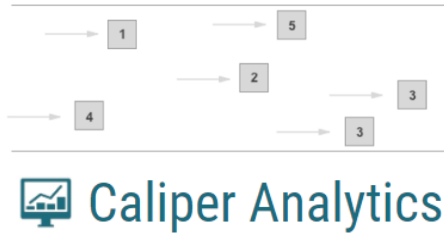
2019年 3月 25日

情報メディア教育研究センター

常盤 祐司

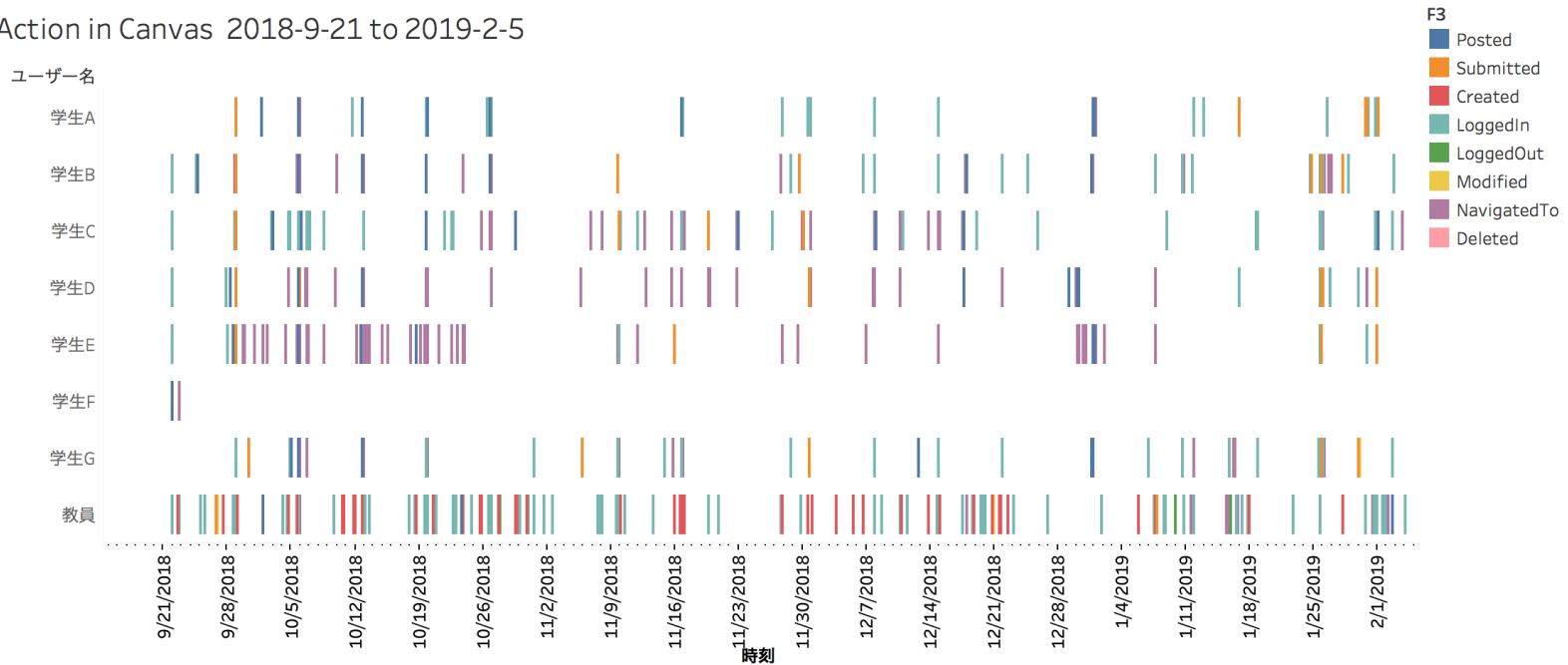
tokiwa@yujitokiwa.jp

LA Platform by Canvas and AWS

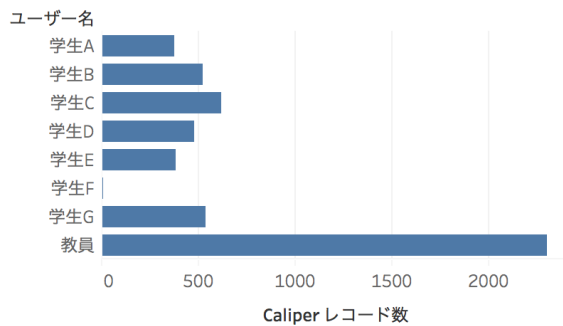


Activity in LMS for a graduate course

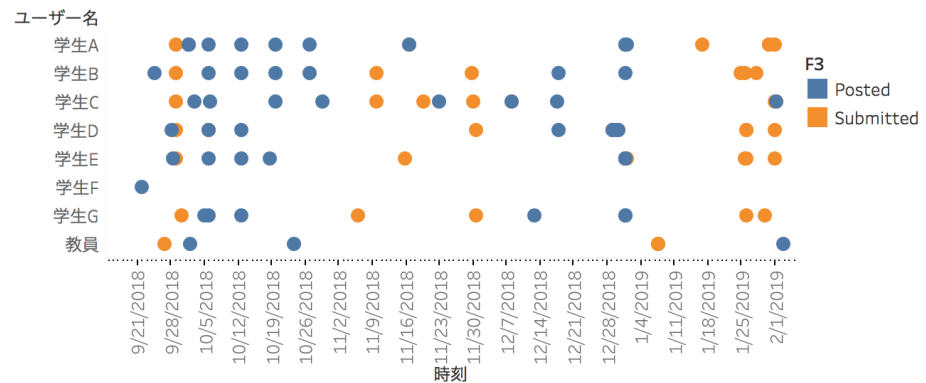
Action in Canvas 2018-9-21 to 2019-2-5



Action合計



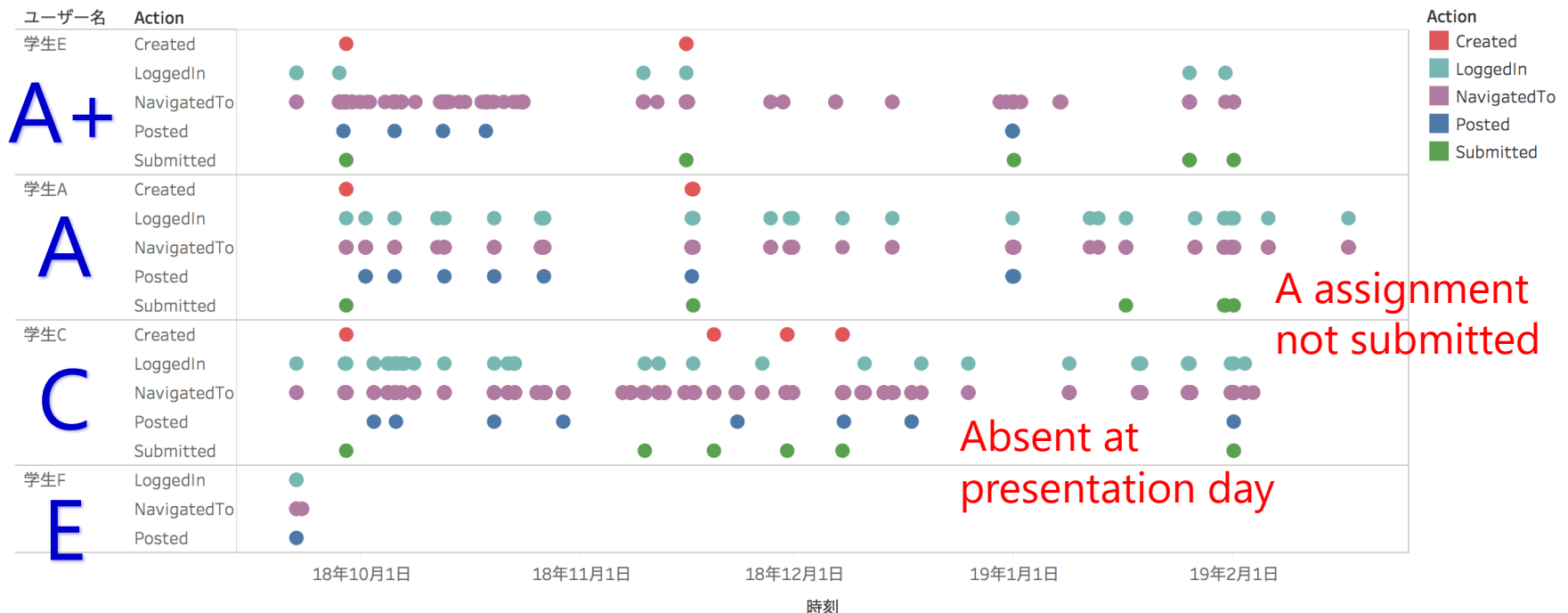
課題提出 Posted & Submitted



Grade Prediction

Feasibility of Grade Prediction by LA action

Action by User



More Data required such as
Point of Assignment, Attendance.....

Data Classification – Unizin Common Data Model

Data	Slow	Medium	Fast
Example	student demographic, socioeconomic, pre-enrollment data	courses, enrollments, grades, and majors	Learning log (by Caliper)



Well-modeled in CEDS
 (The Common Education Data Standards)

Reference: UNIZIN, Solving the Learning Data Puzzle: The Unizin Common Data Model
<https://unizin.org/2017/09/13/solving-the-learning-data-puzzle-the-unizin-common-data-model/>

Business Model for Learning Data

